

HC-G



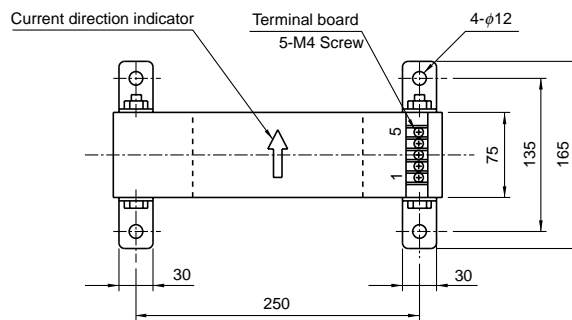
- Rated current 3000A~5000A
- Superior noise-resistance

Applications

High-capacity inverter. High-capacity power-supply.

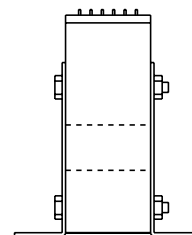
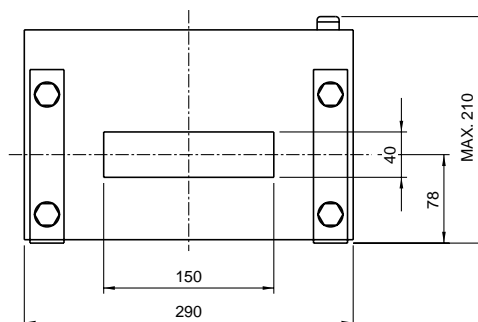
Dimensions

(mm)



- Terminal No.
- 1...(+ terminal
 - 2...(- terminal
 - 3...Output
 - 4...GND
 - 5...Shield

Weight : 10.3kg



Specification

Ta=25°C

Type	HC-GE30V8B15	HC-GE40V8B15	HC-GE50V8B15
Rated current [If]	±3000A	±4000A	±5000A
Saturation current [Is]	±4500A	±6000A	±6000A
Linearity limits	0~±4500A	0~±5000A	0~±5000A
Rated output [Vh]	±8V±1%		
Residual output [Vo]	Within ±30mV		
Output linearity	Within ±1%		
Response time	Within 10μs (at di/dt=100A/μs)		
Output Temp. Coef.	Within ±0.1%/°C		
Residual output Temp. Coef.	Within ±1.5mV/°C		
Control power supply	±15V±5%		
Operating Temp.	-10°C~+75°C		
Storage Temp.	-15°C~+85°C		
Dielectric withstand voltage	2500V AC 50/60Hz 1minute		
Insulation resistance	Not less than 1000MΩ 500V DC		

Note1) The indicated rated output is the one when no load is applied.

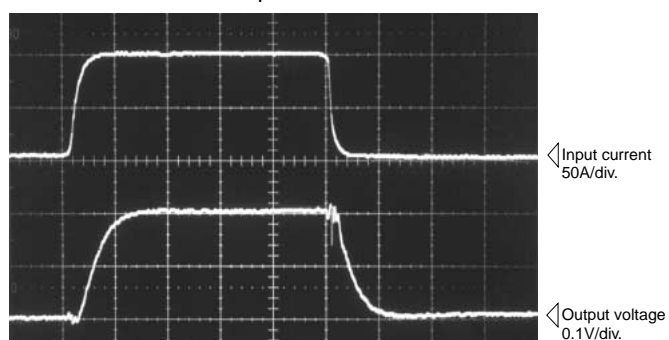
Note2) The indicated residual voltage is the one after the core hysteresis is removed.

Characteristics chart

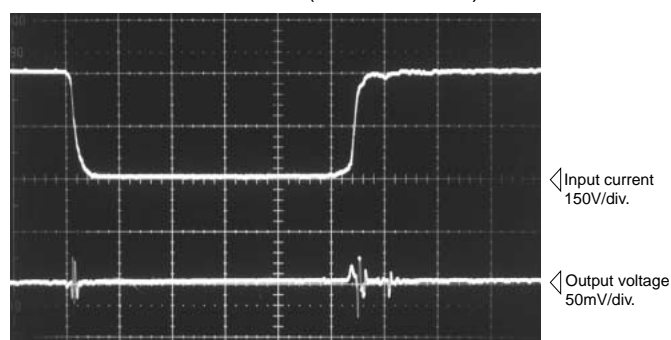
HC-GE40V8B15

Time base : 5μs/div.

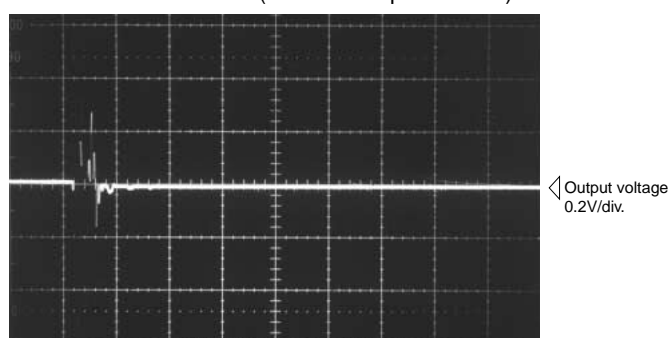
Pulse current response characteristic



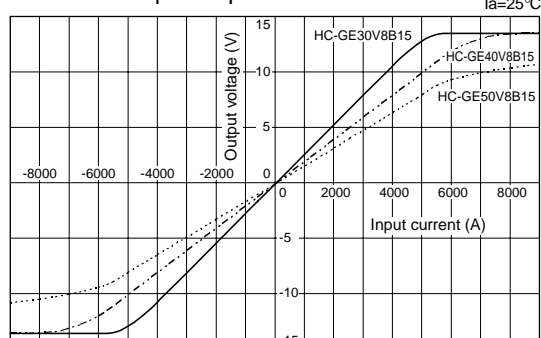
Noise characteristics (Effects of dv/dt)



Noise characteristics (Effects of impulse noise)



Input/output characteristics



Note : The mark "◁" means 0V or 0A.