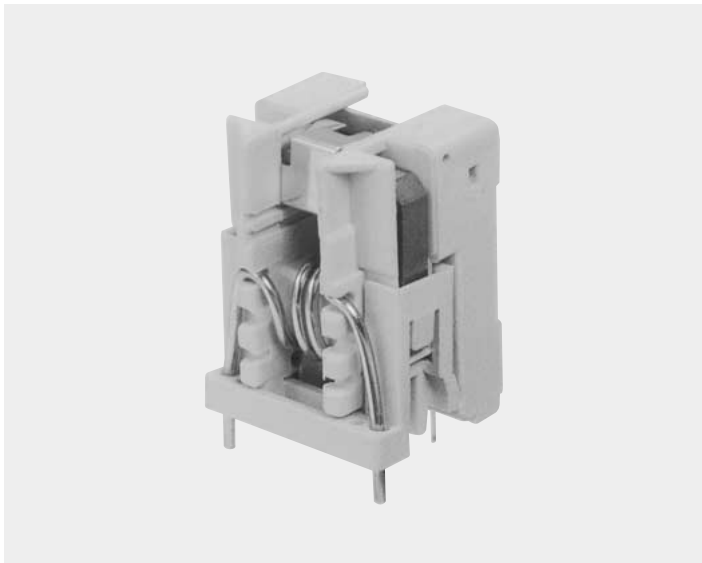


HC-PSG



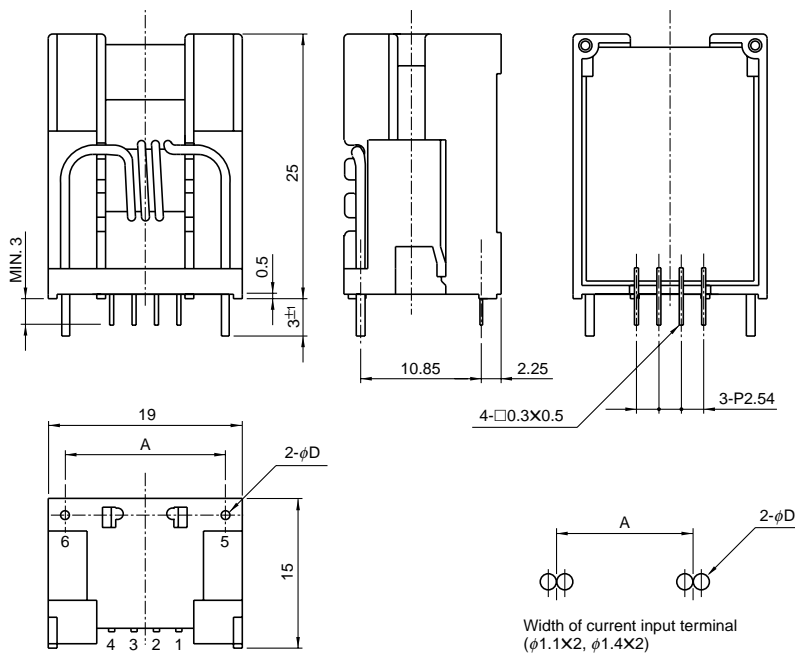
- Rated current .....1A~50A
- Superior noise-resistance
- Models available from 1A

Applications

Inverters, servo drivers, power supply equipment, uninterruptible power systems (UPS)

Dimensions

(mm)



Size of primary winding	Width D	Width A
φ0.4	φ1.3	15.7
φ0.8	φ0.8	15.7
φ1.0	φ1.0	15.7
φ1.3	φ1.3	15.7
φ1.1X2	φ1.1X2	14.3
φ1.4X2	φ1.4X2	14.3

- Terminal No.
- 1...(-) terminal
  - 2...GND
  - 3...(+ terminal
  - 4...Output
  - 5...(+ input
  - 6...(-) input

Weight : 8g

## Specification

Ta=25°C

Type	HC-PSG01V4B15	HC-PSG05V4B15	HC-PSG10V4B15	HC-PSG20V4B15	HC-PSG30V4B15	HC-PSG50V4B15
Rated current [If]	±1A	±5A	±10A	±20A	±30A	±50A
Saturation current [Is]	±3A	±15A	±30A	±45A	±90A	±90A
Linearity limits	0~±2.5A	0~±12.5A	0~±25A	0~±37.5A	0~±75A	0~±75A
Size of primary winding	φ0.4	φ0.8	φ1	φ1.3	φ1.1 × 2	φ1.4 × 2
Rated output [Vh]	±4V±2% (RL=10kΩ)					
Residual output [Vo]	Within ±100mV					
Output linearity	Within ±1%					
Response time	Within 10μs (at di/dt=If/μs)					
Output Temp. Coef.	Within ±0.1%/°C					
Residual output Temp. Coef.	Within ±6mV/°C					
Control power supply	±15V±5%					
Operating Temp.	-10°C~+75°C					
Storage Temp.	-15°C~+85°C					
Dielectric withstand voltage	2500V AC 50/60Hz 1minute					
Insulation resistance	Not less than 500MΩ 500V DC					

Note1) The indicated residual voltage is the one after the core hysteresis is removed.

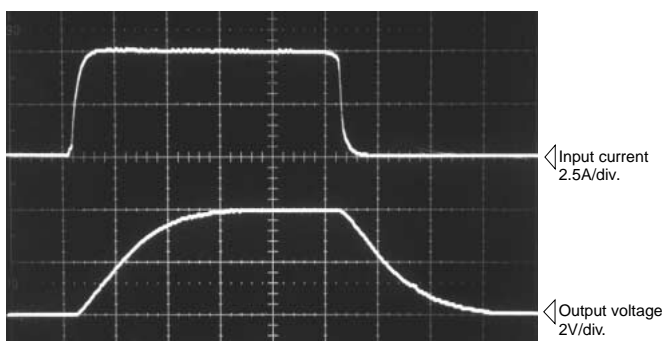
Note2) For continuously flowing DC currents, see the principal characteristics marked by an asterisk (\*) on page 1-5.

## Characteristics chart

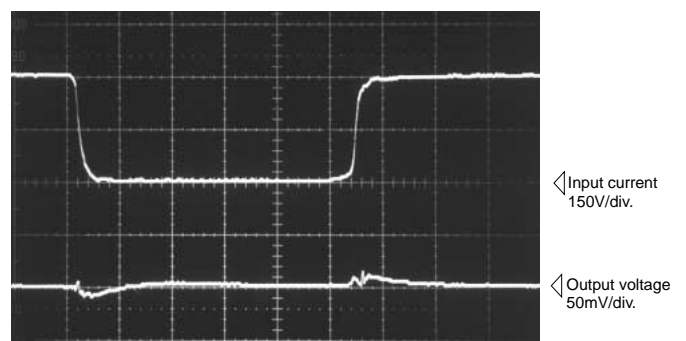
HC-PSG05V4B15

Time base : 5μs/div.

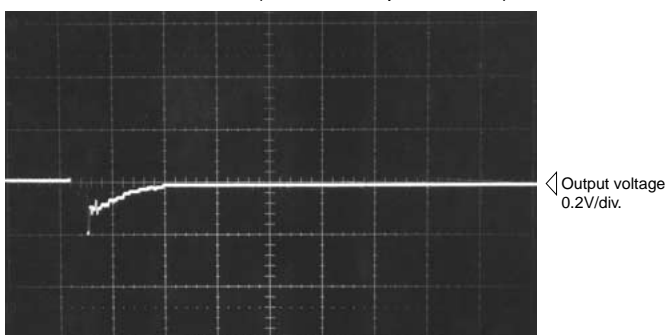
Pulse current response characteristic



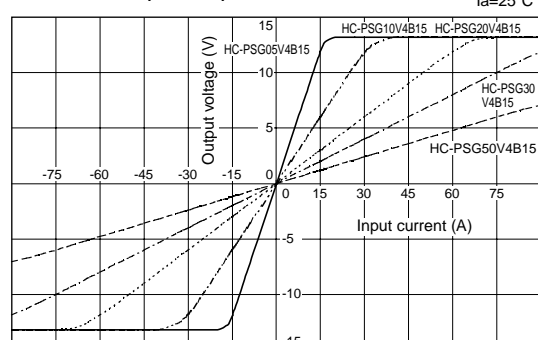
Noise characteristics (Effects of dv/dt)



Noise characteristics (Effects of impulse noise)



Input/output characteristics



Note : The mark "◁" means 0V or 0A.