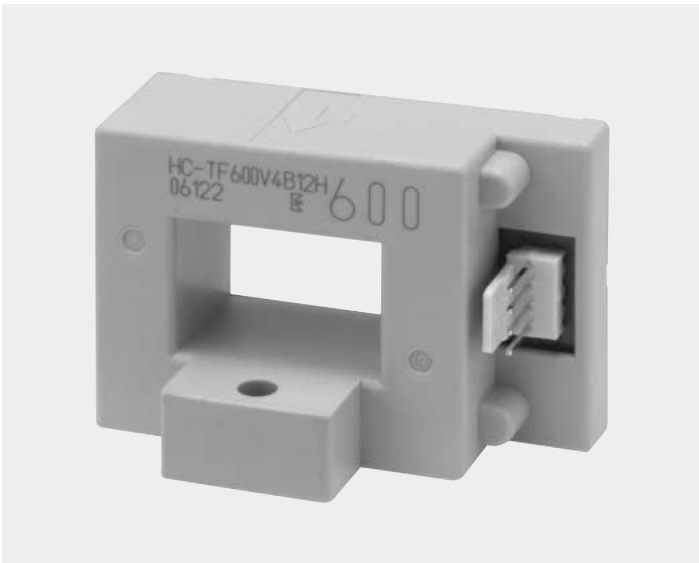


HC-TF



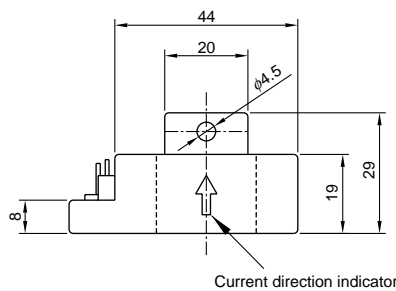
- Rated current 50A ~ 1600A
- Single-power supplies also available

Applications

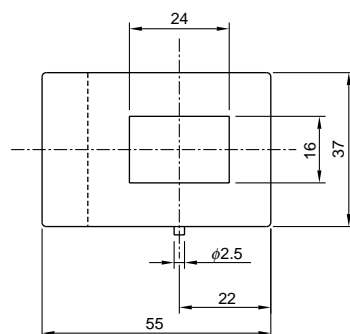
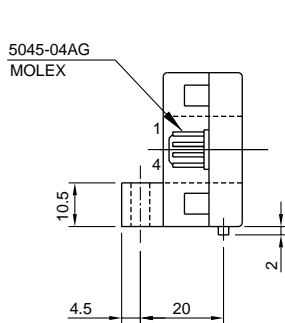
Inverters, servo drivers, power supply equipment, uninterruptible power systems (UPS), NC machine tools, welders

Dimensions

(mm)



Supported-Connector Housing
 5102-04 (MOLEX)
 5051-04 (MOLEX)



Terminal No.
 1...(+ terminal
 2...(- terminal
 3...Output
 4...GND

Weight : 66g

Specification

Ta=25°C

Type	HC-TF050V4B15	HC-TF100V4B15	HC-TF400V4B15	HC-TFE10V4B15H	HC-TFE16V4B15H
Rated current [If]	±50A	±100A	±400A	±1000A	±1600A
Saturation current [Is]	±150A	±300A	±900A	±1800A	±1800A
Linearity limits	0~±112.5A	0~±225A	0~±650A	0~±1600A	0~±1600A
Rated output [Vh]	±4V±1% (RL=10kΩ) (including the residual output)			±4V±3%(RL=10kΩ) (including the residual output)	
Residual output [Vo]	Within ±50mV				
Output linearity	Within ±1%				
Response time	Within 10μs (The smaller one on either at di/dt = 100 A/μs or If/μs.)				
Response performance	Within 10%				
Hysteresis voltage range	Within 30mV				
Output Temp. Coef.	Within ±0.1%/°C				
Residual output Temp. Coef.	Within ±3mV/°C	Within ±1.5mV/°C	Within ±1mV/°C		
Control power supply	±15V±5%				
Consumption current	Within 30mA				
Operating Temp.	-10°C~+75°C				
Storage Temp.	-15°C~+85°C				
Dielectric withstand voltage	2500V AC 50/60Hz 1minute				
Insulation resistance	Not less than 500MΩ 500V DC				

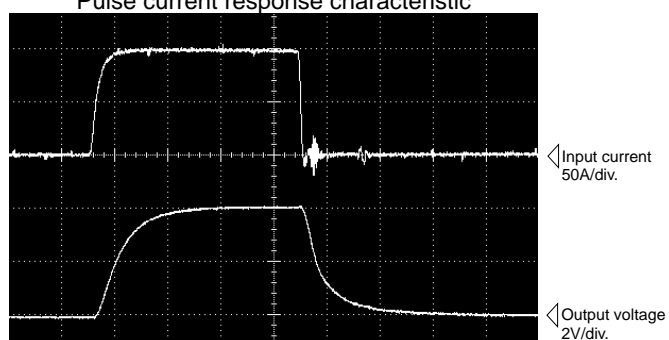
Note1) The indicated residual voltage is the one after the core hysteresis is removed.

Characteristics chart

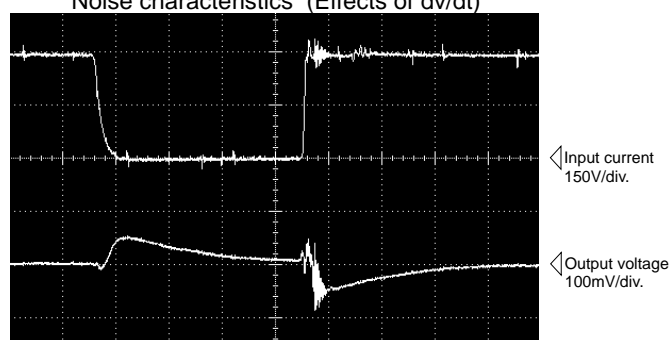
HC-TF100V4B15

Time base : 5μs/div.

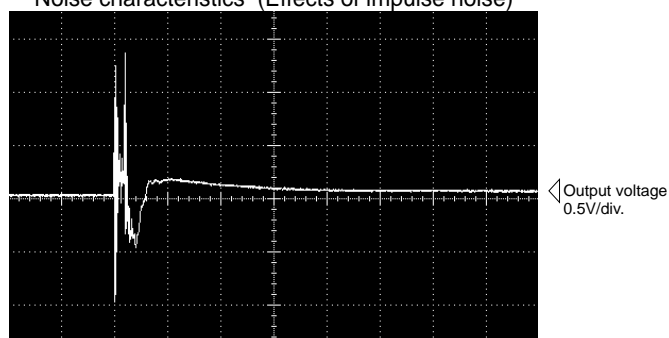
Pulse current response characteristic



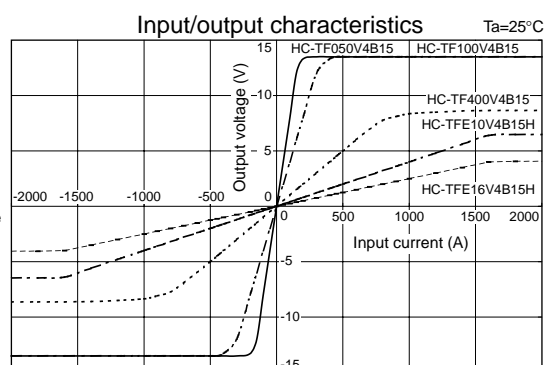
Noise characteristics (Effects of dv/dt)



Noise characteristics (Effects of impulse noise)



Input/output characteristics



Note : The mark "◁" means 0V or 0A.