

HS-GA



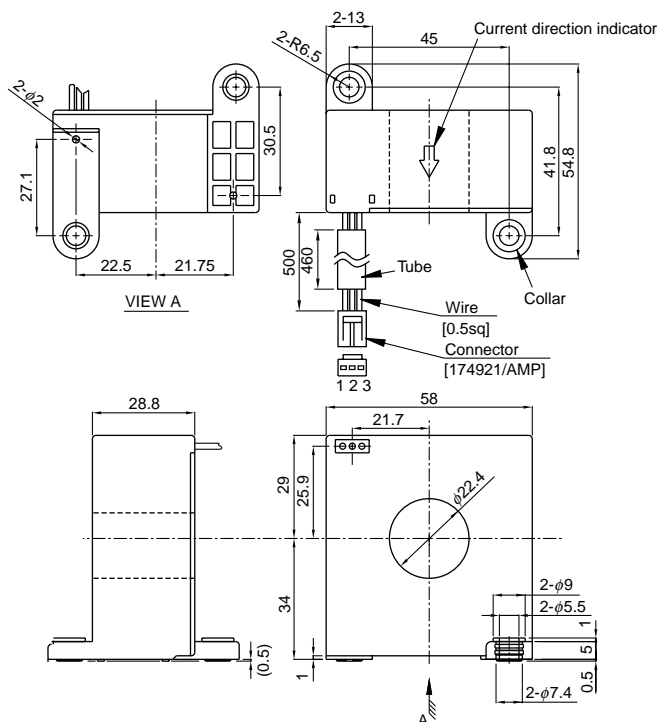
- Rated current 100A ~ 600A
- Superior in response, linearity and temperature characteristics
- Specifications directly out of harness and specifications for in-vehicle connector

Applications

Inverters, power supply equipment, Detection of in-vehicle battery current

Dimensions

(mm)



Supported-Connector Housing
 174928(AMP)

Terminal No.
 1...(+ terminal
 2...(- terminal
 3...Output

Weight : 149g

Specification

Ta=25°C

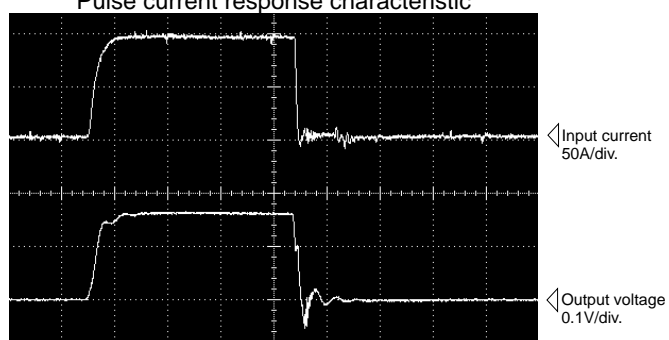
		Current output type					
Type		HS-GA□□□A□□□B15					
Rated current [If]		100 ~ 600A					
Saturation current [Is]		±680A	±650A	±590A	±540A	±500A	±470A
Linearity limits		0~±680A	0~±650A	0~±590A	0~±540A	0~±500A	0~±470A
Load resistance [RL]		5Ω	10Ω	20Ω	30Ω	40Ω	50Ω
Rated output		(Input current/6000) ±1%					
Residual output		Within ±0.2mA					
Output linearity		Within ±0.2%					
Response time		Within 2μs (at di/dt=100A/μs)					
Response performance		Within 10% Note2)					
Hysteresis voltage range		Within 0.2mA					
Output Temp. Coef.		Within ±0.02% /°C					
Residual output Temp. Coef.		Within ±0.003mA /°C					
Control power supply		±15V±5%					
Consumption current		20mA+(Input current/6000)					
Operating Temp.		-40°C~+85°C					
Storage Temp.		-40°C~+85°C					
Dielectric withstand voltage		2500V AC 50/60Hz 1minute					
Insulation resistance		Not less than 500MΩ 500V DC					

Characteristics chart

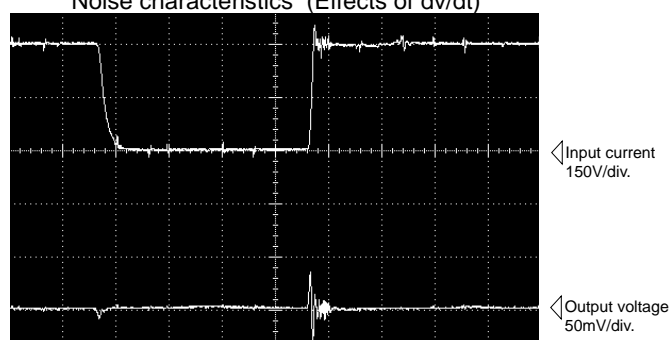
HS-GA□□□A□□□B15 (RL=10Ω)

Time base : 5μs/div.

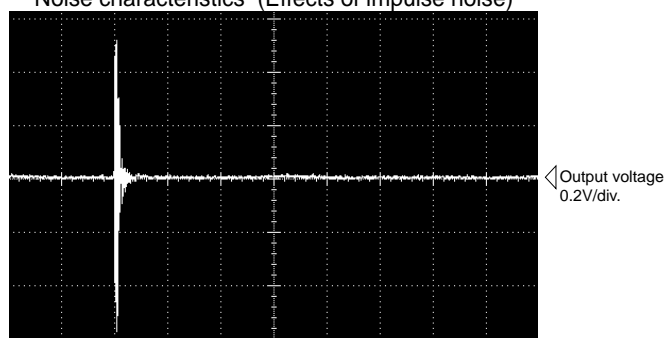
Pulse current response characteristic



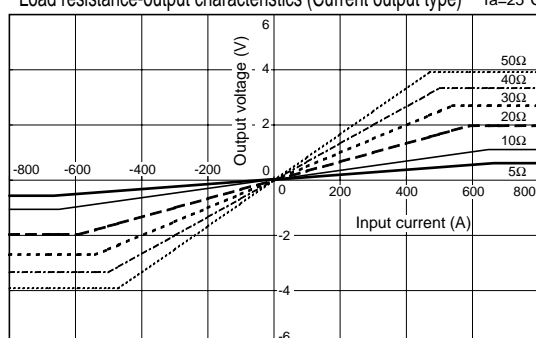
Noise characteristics (Effects of dv/dt)



Noise characteristics (Effects of impulse noise)



Load resistance-output characteristics (Current output type) Ta=25°C



Note : The mark "◁" means 0V or 0A.