

HS-P



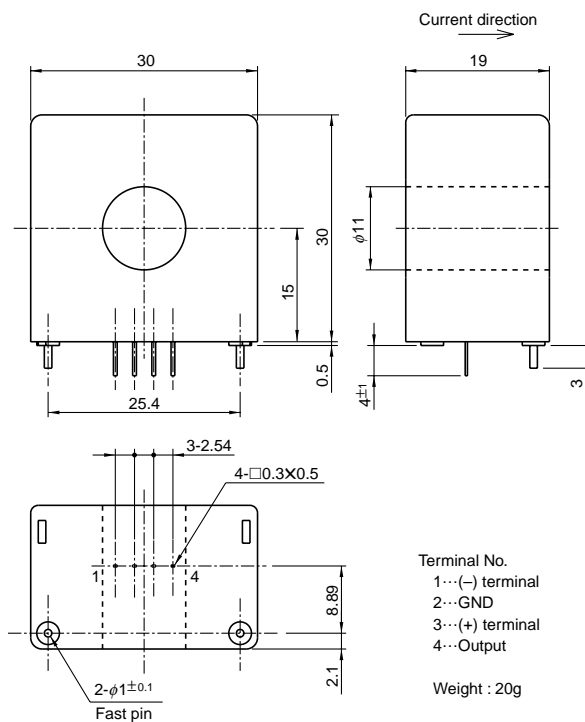
- Rated current50A~100A
- Superior in response, linearity and temperature characteristics
- Both the voltage output and the current output were prepared

Applications

Inverters, servo drivers, power supply equipment, NC machine tools

Dimensions

(mm)



Specification

Ta=25°C

Type	Voltage output type		Current output type	
	HS-P050V4B15	HS-P100V4B15	HS-P050A005B15	HS-P100A005B15
Rated current [If]	±50A	±100A	±50A	±100A
Saturation current [Is]	±100A	±150A	±100A	±150A
Linearity limits	0~±100A	0~±150A	0~±100A (RL=50Ω)	0~±150A (RL=40Ω)
Rated output	±4V±1% (RL=10kΩ)		±50mA±1%	
Residual voltage	Within ±20mV		Within ±0.2mA	
Output linearity	Within ±0.5%		Within ±0.5%	
Response time	Within 1μs (at di/dt=100A/μs)		Within 1μs (at di/dt=100A/μs)	
Output Temp. Coef.	Within ±0.02%/°C		Within ±0.02%/°C	
Residual voltage Temp. Coef.	Within ±1mV/°C		Within ±0.003mA/°C	
Control power supply	±15V±5%			
Consumption current	20mA+(Input current/2000)		20mA+(Input current/1000)	20mA+(Input current/2000)
Operating Temp.	-10°C~+80°C			
Storage Temp.	-15°C~+85°C			
Dielectric withstand voltage	2500V AC 50/60Hz 1minute			
Insulation resistance	Not less than 500MΩ 500V DC			

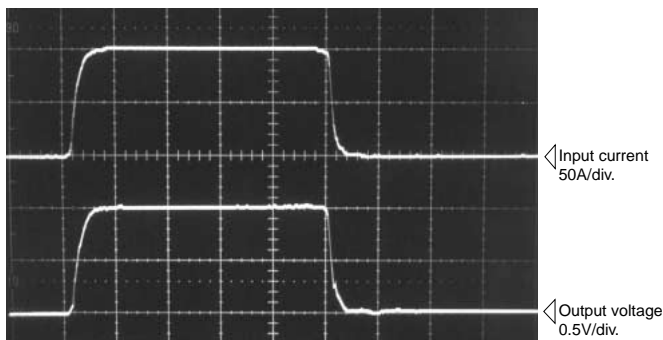
Note1) The indicated residual voltage is the one after the core hysteresis is removed.

Characteristics chart

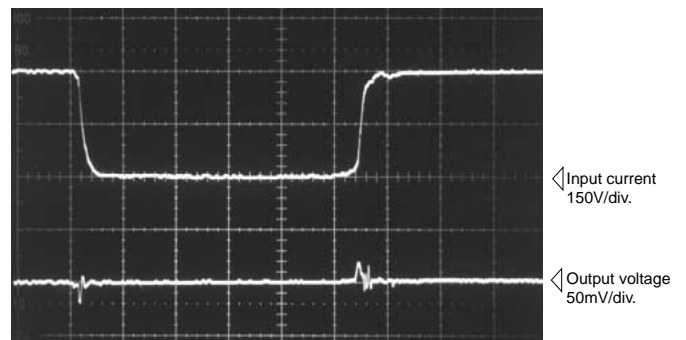
HS-P100A005B15 (RL=20Ω)

Time base : 5μs/div.

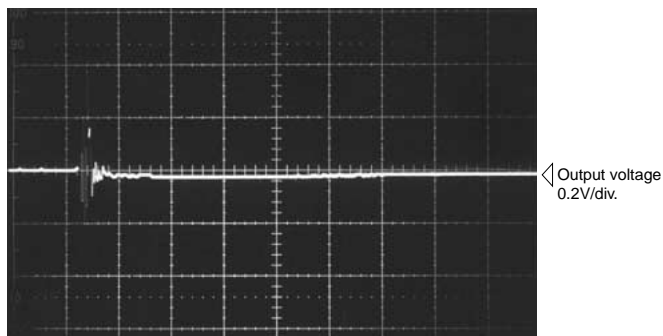
Pulse current response characteristic



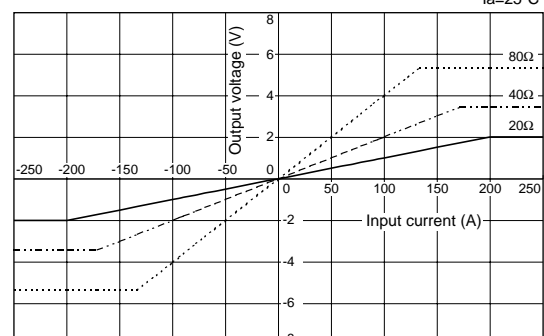
Noise characteristics (Effects of dv/dt)



Noise characteristics (Effects of impulse noise)



Load resistance-output characteristics (Current output type) Ta=25°C



Note : The mark "◁" means 0V or 0A.