

HS-PTF



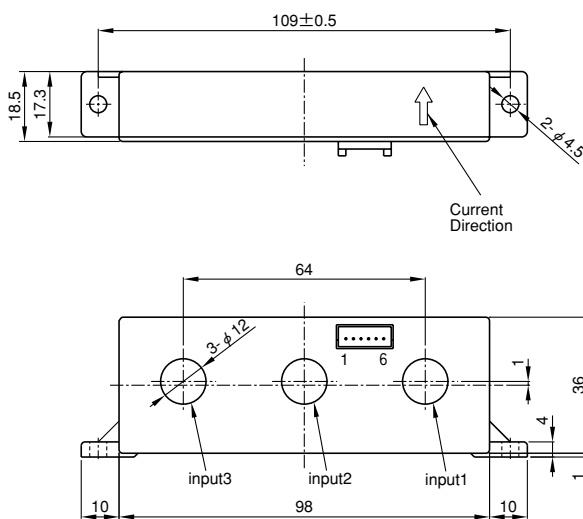
- Rated current50A ~ 100A
- Three circuits can be measured at the same time
- Realized high precision and compact size
- Superior in response, linearity and temperature characteristics
- Both the voltage output and the current output were prepared

Applications

Inverters, servo drivers, power supply equipment, NC machine tools

Dimensions

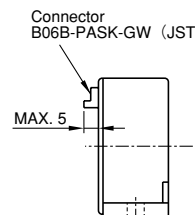
(mm)



Supported Connector Housing
 PAP-06V-S (JST)

- Terminal No.
- 1...Output3
 - 2...Output2
 - 3...Output1
 - 4...(-) terminal
 - 5...GND
 - 6...(+ terminal

Weight : 86g



Specification

Ta=25°C

Type	Voltage output type		Current output type	
	HS-PTF050V4B15	HS-PTF100V4B15	HS-PTF050A00125B15	HS-PTF100A0025B15
Rated current [If]	±50A	±100A	±50A	±100A
Continuously DC current	±50A	±100A	±50A	±100A
Saturation current [Is]	±150A	±200A	±150A	±200A
Linearity limits	0~±125A	0~±200A	0~±150A (RL=50~150Ω)	0~±200A (RL=50~100Ω)
Rated output	+If	V0+4V±1% (RL=10kΩ)	I0+12.5mA±1%	I0+25mA±1%
	-If	V0-4V±1% (RL=10kΩ)	I0-12.5mA±1%	I0-25mA±1%
Residual output [V0,I0]	Within ±20mV		Within ±0.2mA	
Output linearity	Within ±0.5% at If		Within ±0.5% at If	
Secondary coil resistance	Approx. 120Ω		Approx. 120Ω	
Response time	Within 1μs (The small one on either at di/dt=100A/μs or If/μs)		Within 1μs (The small one on either at di/dt=100A/μs or If/μs)	
Response performance	Within 10%		Within 10%	
Hysteresis voltage range	Within 20mV		Within 0.2mA	
Output Temp. Coef.	Within ±0.02%/°C		Within ±0.02%/°C	
Residual output Temp. Coef.	Within ±1mV/°C		Within ±0.01mA/°C	
Control power supply	±15V±5%			
Consumption current	60mA+(Input current/4000)			
Operating Temp.	-10°C~+75°C			
Storage Temp.	-15°C~+85°C			
Dielectric withstand voltage	2500V AC 50/60Hz 1minute			
Insulation resistance	Not less than 500MΩ 500V DC			

Note1) The indicated residual voltage is the one after the core hysteresis is removed.

Note2) Energization time of saturation current shall be within 1 second.

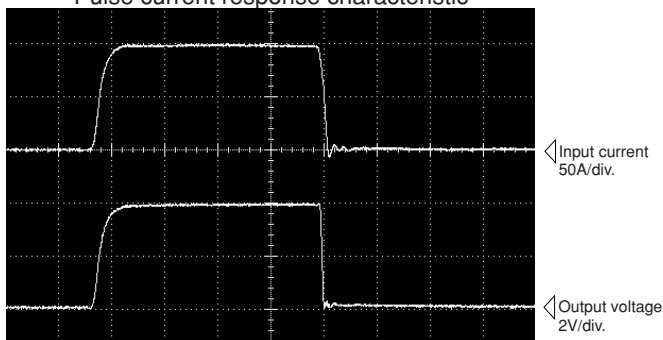
Note3) Energization time of continuous live DC current ×150% shall be within 1 minute.

Characteristics chart

HS-PTF100V4B15

Time base: 5μs/div.

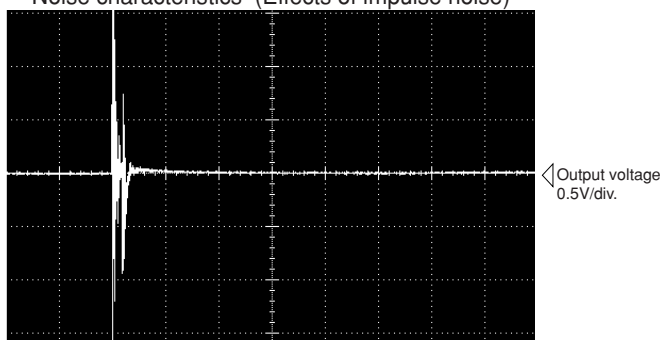
Pulse current response characteristic



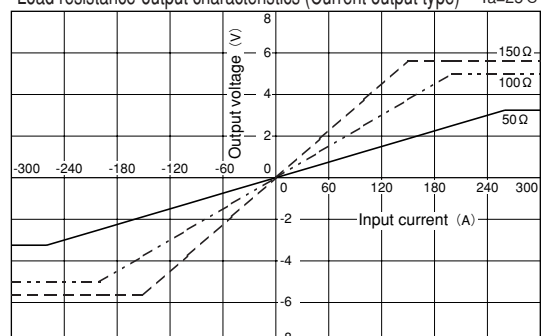
Noise characteristics (Effects of dv/dt)



Noise characteristics (Effects of impulse noise)



Load resistance-output characteristics (Current output type) Ta=25°C



Note : The mark "◁" means 0V or 0A.