

HS-U



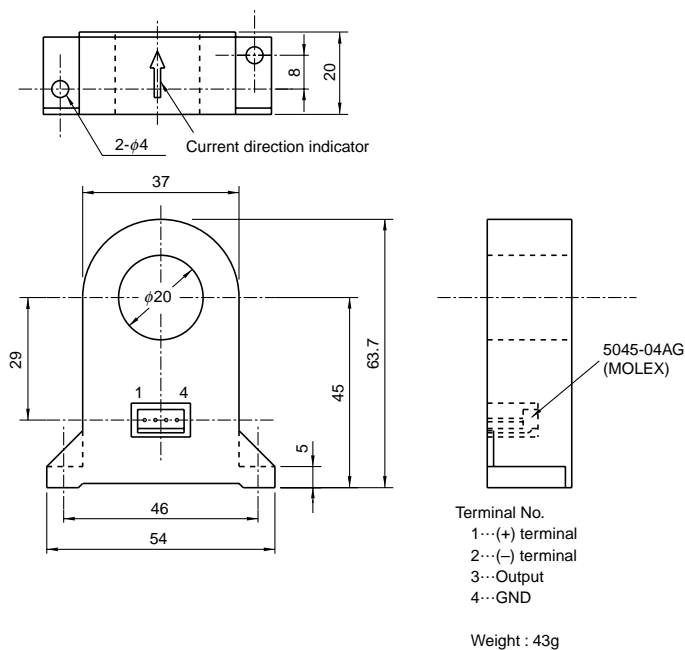
- Rated current50A~300A
- Superior in response, linearity and temperature characteristics
- Both the voltage output and the current output were prepared

Applications

Inverters, servo drivers, power supply equipment, NC machine tools

Dimensions

(mm)



Specification

Ta=25°C

Type	Voltage output type			Current output type		
	HS-U050V4B15	HS-U100V4B15	HS-U300V4B15	HS-U050A005B15	HS-U100A005B15	HS-U300A015B15
Rated current [If]	±50A	±100A	±300A	±50A	±100A	±300A
Saturation current [Is]	±150A	±300A	±400A	±150A	±300A	±400A
Linearity limits	0~±150A	0~±300A	0~±400A	0~±150A(RL=50Ω)	0~±300A(RL=20Ω)	0~±400A(RL=1Ω)
Rated output	±4V±1% (RL=10kΩ)			±50mA±1%		±150mA±1%
Residual voltage	Within ±20mV			Within ±0.2mA		
Output linearity	Within ±0.5%			Within ±0.5%		
Response time	Within 1μs (at di/dt=100A/μs)			Within 1μs (at di/dt=100A/μs)		
Output Temp. Coef.	Within ±0.02%/°C			Within ±0.02%/°C		
Residual voltage Temp. Coef.	Within ±1mV/°C			Within ±0.003mA/°C		
Control power supply	±15V±5%					
Consumption current	20mA+(Input current/1000)	20mA+(Input current/2000)		20mA+(Input current/1000)	20mA+(Input current/2000)	
Operating Temp.	-10°C~+80°C					
Storage Temp.	-15°C~+85°C					
Dielectric withstand voltage	2500V AC 50/60Hz 1minute					
Insulation resistance	Not less than 500MΩ 500V DC					

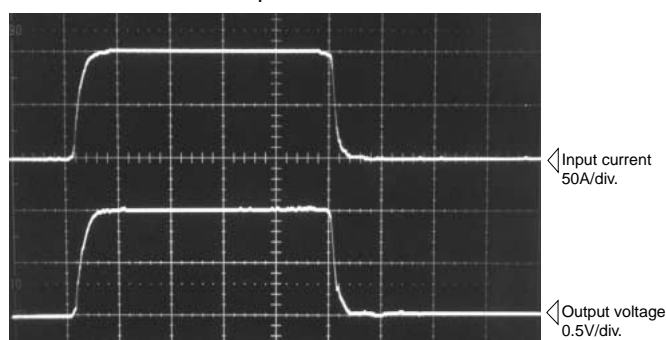
Note1) The indicated residual voltage is the one after the core hysteresis is removed.

Characteristics chart

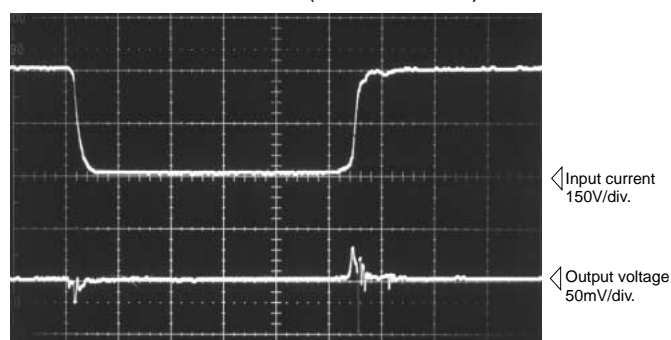
HS-U100A005B15 (RL=20Ω)

Time base : 5μs/div.

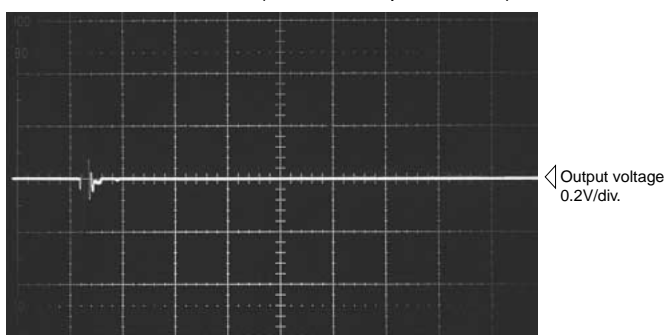
Pulse current response characteristic



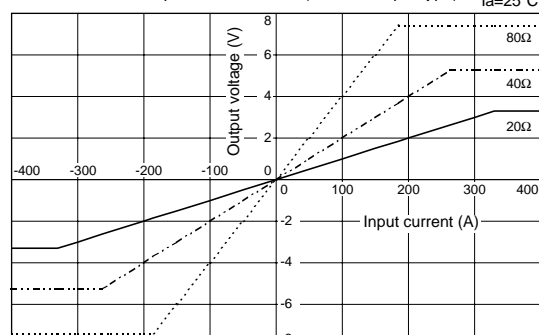
Noise characteristics (Effects of dv/dt)



Noise characteristics (Effects of impulse noise)



Load resistance-output characteristics (Current output type)



Note : The mark "◁" means 0V or 0A.